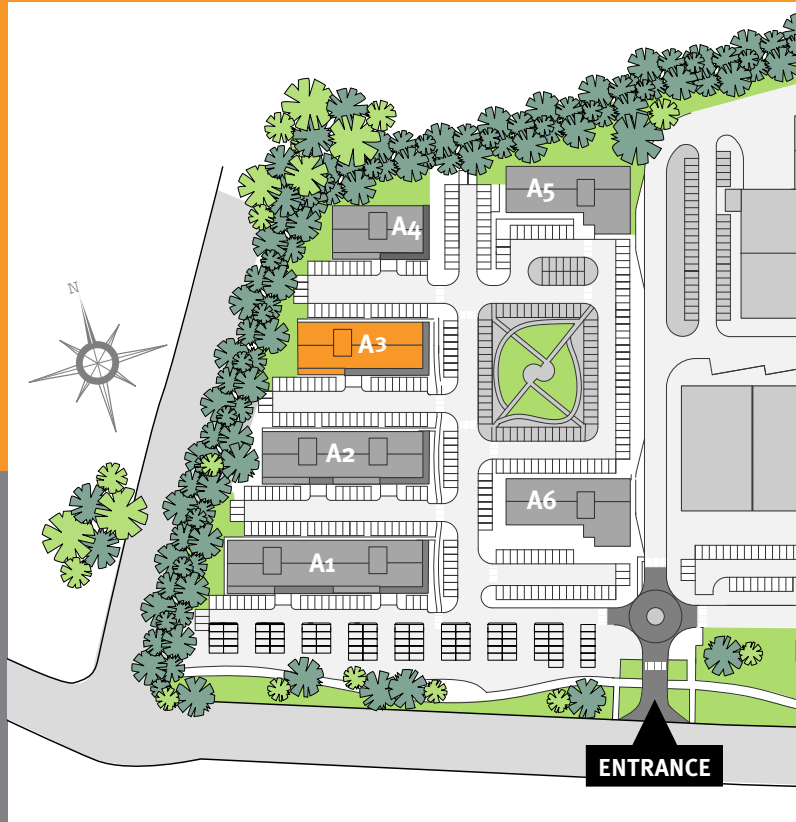


# Fota Business Park Business & Office Units



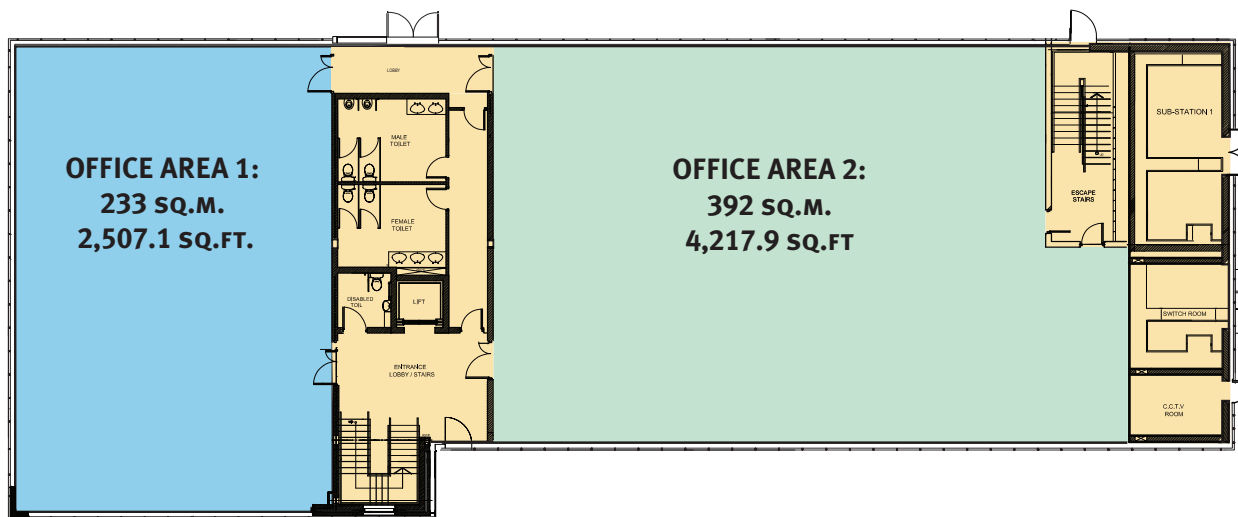
**fota**  
RETAIL &  
BUSINESS  
PARK



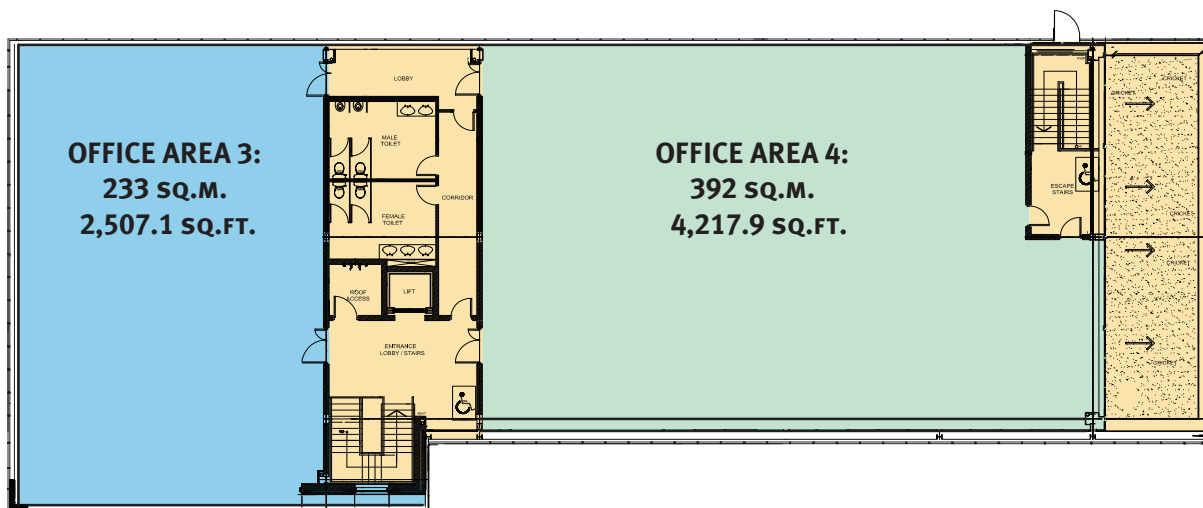
CARRIGTWOHILL  
CORK • IRELAND

- Part of the Fota Retail and Business Park, which is one of the largest and architecturally most advanced Retail Warehouse and Commercial Developments in the Munster area
- Prestigious Business Campus environment
- High profile location with superb access from N25 dual carriageway
- Adjoining proposed Carrigtwohill commuter railway station
- Suitable for a wide variety of Business, Office and Technology Uses
- Units ranging in size from 120 sq.m. to 2177 sq.m.
- Landscaped Business Park with excellent car parking facilities





GROUND FLOOR PLAN



FIRST FLOOR PLAN



## Business Park Specifications Business & Office Units

High Spec third generation office units

- Feature entrance and foyers, fully fitted to a high standard
- Excellent car parking facilities
- Suspended acoustic tile ceiling
- Fully air-conditioned
- Paint finish to all walls

## JOINT AGENTS



1 South Mall, Cork  
 Tel: 021 4275079  
 Fax: 021 4272405  
 Contacts:  
 Margaret Kelleher (mkelleher@lisney.com)  
 Edward Hanafin (ehanafin@lisney.com)



23 Marlboro Street, Cork  
 Tel: 021 4277745  
 Fax: 021 4272346  
 Contact:  
 Gerard O'Callaghan (gocallaghan@remax.net)

